

### FEATURES

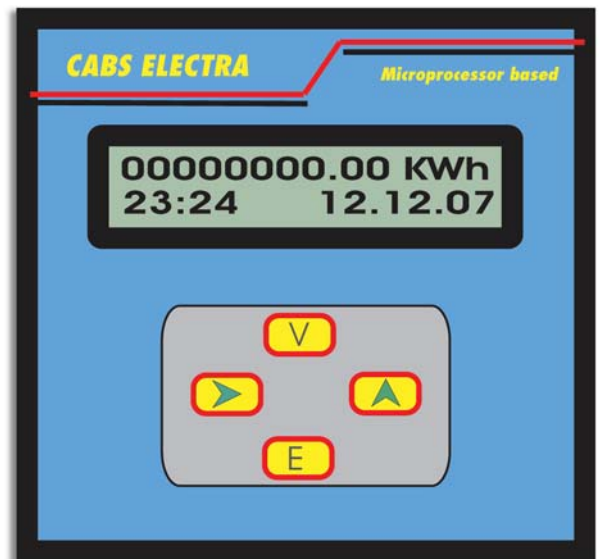
- Microprocessor based
- 1.0% Accuracy
- 16 Characters x 2 Line backlit LCD display
- 9 + 2 Digit energy recording
- High resolution
- Real time clock with date
- Integ. Pulse LED
- Easy to mount 96 mm x 96 mm Bezel
- Direct reading with user programmable CT/PT ratios
- CT/PT Ratios can be changed at site by user
- Password protection for setup features
- Works on balanced/unbalanced load
- Optional Rs 232 port

### INTRODUCTION

The Ce - 03\* EML Series metering system is a Microprocessor based Energy meters which is today's answer for energy conscious industries and utilities. Energy management can only be possible through accurate measurement. The CE - 03\* EML Series has a 16 x 2 Character LCD display with a 9 + 2 digit Energy recording feature which ensures a huge recording range. The backlit LCD display makes reading easy even in bad light conditions. Four buttons are provided on the front plate of the meter for easy access to the various user setup features and other parameters like date/time and CT/PT ratios. The CE 03\* EML Series meter is available for use in LT & HT systems. The meter have an inbuilt feature of reverse locking to prevent tampering due to phase reversal. These meters are factory set for either 1 Amp or 5 Amp CT secondary. The CT/PT ratios can be viewed by the user through the front panel display of the meter

### TECHNICAL SPECIFICATIONS

<b>Measurement</b>	KWh
<b>Range of measurement</b>	99999999.99 KWh
<b>Range of operation</b>	0.5 LAG - 0.5 Lead
<b>Auxilliary supply</b>	110/230V +/- 10%, 50 Hz
<b>CT secondary</b>	1 Amps or 5 Amps
<b>PT secondary</b>	110V, 63.5V or 230 V direct
<b>CT/PT ratio</b>	User programmable
<b>Application</b>	3 Phase 3 wire/3 phase 4 wire
<b>Accuracy</b>	0.5% or 1% at UPF/Full load
<b>Display</b>	16 Character x 2 line backlit LCD
<b>Clock</b>	24 Hr mode, +/- 1 min/months
<b>Date</b>	dd/mm/yr format
<b>Dimensions</b>	Bezel 96 mm x 96 mm Cutout 92 mm x 92 mm Depth 60 mm with out connectors
<b>Weight</b>	700 Gms, Approx
<b>Input impedance</b>	1 Meg Ohms for Voltage Circuit 0.002 Ohms for Current Circuit
<b>Environmental</b>	Operating temperature - 70 Deg C Storage 20 - 85 Deg C. Humidity 0 - 95% Non Condensing
<b>Dielectric</b>	2 KV for 1 Min



\*Technical Specifications & Appearance are subject to change without prior notice